



Snake gourds and Insects
Hosomi Museum

JAKUCHU

with high resolution reproduction

Tue, 11 March 2014 - Sat, 15 March 2014 10:00 - 17:30 Free admission
Place: ASIA HOUSE, 63 New Cavendish Street, London W1G 7LP

Exhibition

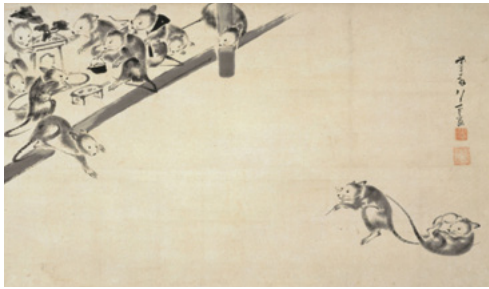
Cooperation: Embassy of Japan in the UK / British Museum / University of London / Sainsbury Institute / ASIA HOUSE
Supported by the Agency for Cultural Affairs Government of Japan in the fiscal 2013

An exhibition(with high resolution reproduction) and a symposium will be held in the United Kingdom with the collaborative effort of Sainsbury Institute for the Study of Japanese Arts and Cultures and ASIA HOUSE. The exhibit will follow through the past and present of the Japanese art and culture with the purpose of advancing further studies on these subjects.
The year 2013 marked the 400th anniversary of the relations between Japan and the United Kingdom, and ITO JAKUCHU will serve as the mediator for further relations between the two nations.

JAKUCHU Exhibition

with high resolution reproduction

Tue,11 March 2014 - Sat,15 March 2014 10:00-17:30 Free admission Place: ASIA HOUSE



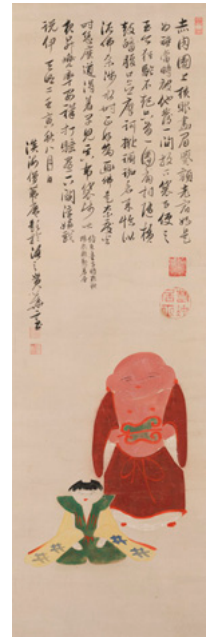
A



B



C



D



- A 鼠婚礼图 (Marriage of Mice)
- B 雪中雄鶏图 (Rooster in the Snow)
- C 丝瓜群虫图 (Snake gourds and Insects)
- D 伏见人形图 (Fushimi Dolls)

JAKUCHU Symposium

ITO JAKUCHU and Japanese Culture

Sat,15 March 2014 14:00-17:30 Free admission Place: ASIA HOUSE

Greeting : Christine Guth (Victoria and Albert Museum)

Speakers : Timothy Clark (British Museum)

Timon Screech (SOAS,University of London)

Nicole Coolidge Rousmaniere(Sainsbury Institute)

Hiroyuki Kano (Doshisha University)

Yoshiyuki Hosomi (Hosomi Museum)



Location

63 New Cavendish Street, London W1G 7LP

Asia House is located in the heart of the West End of London, north west of Oxford Circus and near Regents Park.

By Tube

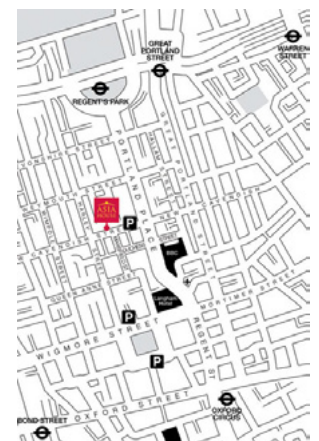
Oxford Circus, Regents Park and Great Portland Street

By Bus

There are a number of buses available to Asia House, to plan your trip to Asia House with Transport for London's on-line journey planner, visit <http://www.tfl.gov.uk>

By Car

There is limited public parking in the streets surrounding Asia House (free at the weekends and after 18.30). Asia House is also located close to several NCP parking locations.



Contact Kyoto art and culture project Mail : contact@anewal.net